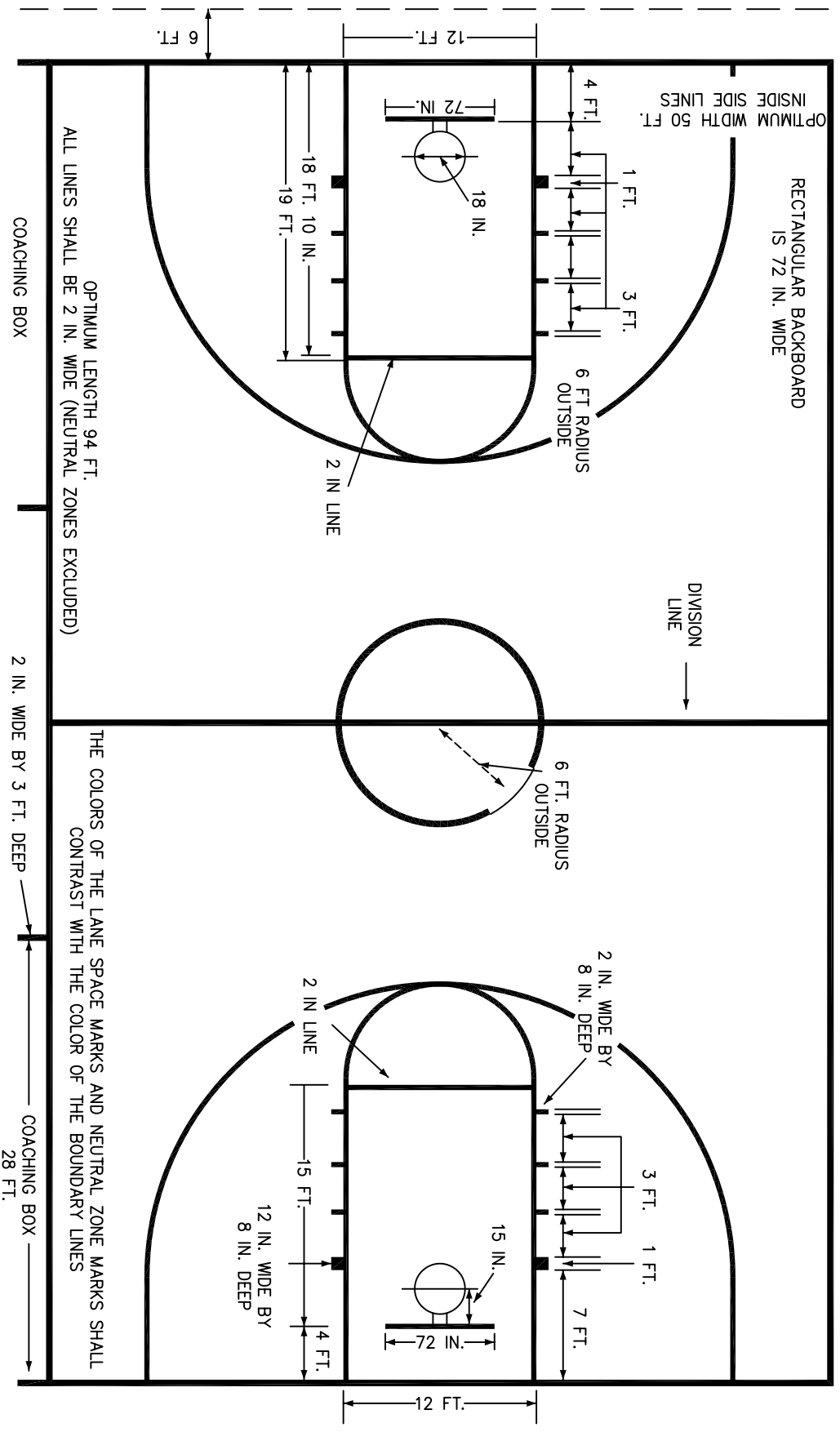


HIGH SCHOOL & COLLEGE COURT

Note: The optimum length of the high school court is 84 feet. If court is less than 74 feet long, it should be divided by tow lines, each parallel to and 40 feet from the farther end line.

MINIMUM of 3 FT.
 Preferably 10 ft. unobstructed space outside



(Reprinted with permission of the NCAA)